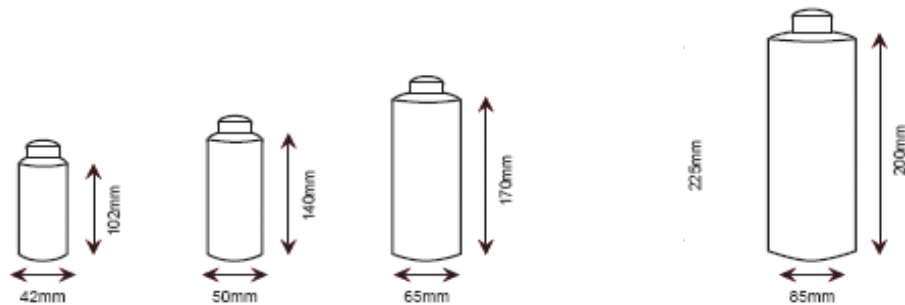


WHOLESALE PRICE LIST: 27 May 2022 (EX PERTH)**

PRICES GST EXCLUSIVE

BOTTLES

| BOTTLES (NO CAP) | | (stock items) | | | | |
|---|-------------|----------------------|-------------------|--------------------|-------------------|---------------------|
| Size | Code | Pack Qty | Pallet Qty | Piece Price | Pack Price | Pallet Price |
| 125ml NATURAL (Dia 42mm, Ht 102mm) | B125MLNATWA | 336 | 3360 | 0.97 | 0.64 | 0.56 |
| 250ml NATURAL (Dia 50mm, Ht 140mm) | B250MLNATWA | 336 | 3024 | 1.09 | 0.72 | 0.63 |
| 500 ml NATURAL (Dia 65mm, Ht 170mm) | B500MLNATWA | 286 | 3146 | 1.35 | 0.89 | 0.78 |
| 750 ml NATURAL (Dia 75mm, Ht 225mm) | B750MLNATWA | 201 | 3015 | 1.60 | 1.07 | 0.94 |
| 1 Litre NATURAL (Dia 85mm, Ht 200mm) <i>White available as a pallet purchase only</i> | B1LNATWA | 144 | 3024 | 1.46 | 0.97 | 0.85 |



| BOTTLE ACCESSORIES | | (stock items) | | | | |
|--------------------------------|---------------|----------------------|--|--------------------|-------------------|--|
| Product | Code | Pack Qty | | Piece Price | Pack Price | |
| CAPS | | | | | | |
| 28mm Cap - Wadded (Red) | CAP28MMWADR | 2400 | | 0.22 | 0.19 | |
| 28mm Cap - Wedged (Red) | CAP28MMREDWA | 3000 | | 0.30 | 0.19 | |
| 28mm Squirt Top (White) | CAP28MMSQUIRT | 1500 | | 0.22 | 0.20 | |
| LOTION PUMPS / SPRAYS | | | | | | |
| 28mm Lotion Pump (White) - 4cc | PUMP28MM4 | 500 | | 1.87 | 1.63 | |
| 28mm Trigger Sprayer | SPRAYER | 350 | | 1.07 | 0.93 | |
| 28mm Trigger Sprayer Jumbo | SPRAYERJUMBO | 200 | | 4.52 | 3.25 | |
| 28mm Wet Spray (White) | SPRAYERWET | 800 | | 0.74 | 0.62 | |
| 28mm Trigger Spray Chem Resist | SPRAYERBLK | 350 | | 2.31 | 1.66 | |



Delivery Perth Nominated metro areas - \$30+gst.

Outer metro/ regions - nominate your freight company or ask for a quote. *Prices and delivery areas subject to change.

WHOLESALE PRICE LIST: 27 May 2022 (**EX PERTH)

PRICES GST EXCLUSIVE

BUCKETS, BULK BINS

BUCKETS (non-stock)

| Product | Colour | Code | Lid | Quantity | | Price | | |
|--------------------------------------|--------------|------|------|----------|--------|-------|-------|--------|
| | | | | Pack | Pallet | Piece | Pack | Pallet |
| 13.6L/3G Bucket & Handle (300 x 295) | Wh/ Red | N151 | N148 | 5 | 360 | 23.79 | 17.25 | 14.71 |
| Lid to suit N151 - 3G Bucket | Wh | N148 | | 20 | 1280 | 6.18 | 5.02 | 4.92 |
| 18.2L/4G Bucket (360 x 295) | Wh | N258 | N073 | 5 | 180 | 33.04 | 23.96 | 20.65 |
| 22L/5G Bucket & Handle (360 x 360) | Wh/ Blu/ Red | N075 | N073 | 5 | 180 | 30.16 | 24.54 | 22.90 |
| Lid to suit N258/075 4G/5G | Wh | N073 | | 30 | 540 | 17.65 | 12.79 | 11.03 |

LARGE ROUND TUBS (stock item)

| | | | | | | | | |
|--------------------------------|----------|-------|-------|----|-----|--------|--------|--------|
| 67L/15G Container (540 x 508) | Nat/ Red | IP015 | IP016 | 5 | 72 | 81.00 | 62.89 | 59.37 |
| 84L/18G Container (540 x 610) | Nat/ Grn | IP018 | IP016 | 5 | 72 | 122.98 | 89.16 | 76.86 |
| Lid to suit IP015 and IP018 | Nat | IP016 | | 15 | 180 | 44.71 | 32.41 | 27.94 |
| 114L/25G Container (637 x 455) | Nat/ Red | IP025 | IP026 | 5 | 20 | 143.11 | 115.20 | 103.76 |
| Lid to suit IP025 25G | Nat | IP026 | | 10 | 50 | 53.67 | 38.91 | 31.01 |

BULK BINS

| | | | | | | | | |
|--|---------------|-----------------|--|---|----|--------|--------|--------|
| Handy Tubs IH539 | (stock items) | | | | | | | |
| 200L Handy Tub (Regrind) | Black | HTRG | | 5 | 30 | 192.56 | 155.01 | 139.60 |
| 200L Handy Tub (Food Grade) (990 x 660 x 470) | Nat | HTNAT | | 5 | 30 | 212.13 | 164.70 | 161.30 |
| Mega Bins | (stock items) | | | | | | | |
| 800L Mega Bin (Solid) | Grey | MBIN800LS | | 5 | | 507.56 | 394.07 | |
| 800L Mega Bin (Vented) (1162 x 1162 x 780) | Grey | MBIN800LV | | 5 | | 526.01 | 408.40 | |
| Mega Bin Lid (1180 x 1180 x 35) | Grey | MBINLID | | 5 | | 297.83 | 215.93 | |
| 800L Bin (Collapsible) (1162 x 1162 x 780) | Grey | MBINCOLLAPSE | | 7 | | 612.00 | 512.25 | |
| Collapsible Bin Lid (1162 x 1162 x 90) | Grey | MBINCOLLAPSELID | | 7 | | 135.85 | 112.10 | |
| Oz Crate Collapsible Mega Bin 750L (1162 x 1162 x 785) | Grey | MBINOZCRATE | | 5 | | 573.42 | 476.74 | |
| Oz Crate Lid | | MBINOZCRATELID | | 5 | | 91.52 | 75.52 | |
| IBCs* | (stock items) | | | | | | | |
| 1000L IBC with Aluminium Cage (1200 x 1000 x 1160, 2 way entry) | Nat | IBC1000LWA | | | | 392.10 | | |
| IBC Adaptor Black | | ADAPTIBC | | | | 21.43 | | |
| IBC Camlock Adaptor | | ADAPTCAMLOCK | | | | 21.43 | | |



Delivery Perth Nominated metro areas - \$30+gst.

Outer metro/ regions - nominate your freight company or ask for a quote. *Prices and delivery areas subject to change.

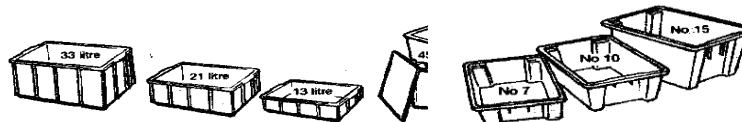
WHOLESALE PRICE LIST: 27 May 2022 (**EX PERTH)

PRICES GST EXCLUSIVE

CRATES

CRATES (NALLY / VISCOUNT)

| Code | Description | Ext mm L x W x H | Avail Colour | Mat & Feat | Lid | Qty | | Price | | |
|------------------------------------|---|-------------------------|--------------------------------|------------|-------------|------|--------|-------|-------|--------|
| | | | | | | Pack | Pallet | Piece | Pack | Pallet |
| Stack and Nest Crates | | (stock items) | | | | | | | | |
| IH060DBLK | 32L No 7 Crate, Solid | 0 | Regrind | PP, SA/NT | IH052 | 5 | 70 | 16.57 | 12.86 | 12.14 |
| IH060 | 32L No 7 Crate, Solid | 0 | Blu/ Red/ Nat Gry/ Grn/ Yel | PP, SA/NT | IH052 | 5 | 70 | 21.64 | 16.80 | 15.86 |
| IH051DBLK | 52L No10 Crate (Regrind) | 0 | Regrind | PP, SA/NT | IH052BLK | 5 | 70 | 17.55 | 13.62 | 12.86 |
| IH051 | 52L No 10 Crate | 0 | Blu/ Red/ Nat Gry/ Grn/ Yel | PP, SA/NT | IH052 | 5 | 70 | 24.23 | 18.81 | 17.76 |
| IH078DBLK | 68.2L No15 Crate (Regrind) | 0 | Regrind | PP, SA/NT | IH052D | 5 | 60 | 40.04 | 31.67 | 29.34 |
| IH078 | 68.2L No15 Crate | 0 | Blu/ Red/ Nat Gry/ Grn/ Yel | PP, SA/NT | IH052 | 5 | 60 | 45.96 | 35.68 | 33.68 |
| IH052DBLK | Pilfer Proof Lid (Regrind) - IH051BLK | 0 | Blk Recycled | PP | | 20 | 160 | 11.71 | 9.09 | 8.58 |
| IH052 | Pilfer Proof Lid - IH051 | 0 | Natural | PP | | 20 | 160 | 12.70 | 9.86 | 9.31 |
| Multi Stackers / Tote Boxes | | (stock items) | | | | | | | | |
| IH305 | Small Multi Stacker - 13L | 0 | Wh/ Blu | PP, SA | IH308 | 5 | 120 | 14.05 | 10.91 | 10.30 |
| IH306 | Medium Multi Stacker - 22L | 0 | Wh/ Blu | PP, SA | IH308 | 5 | 96 | 24.69 | 19.17 | 18.09 |
| IH307 | Large Multi Stacker - 32L | 0 | Wh/ Blu | PP, SA | IH308 | 5 | 64 | 27.30 | 21.20 | 20.01 |
| IH308 | Multistacker Lid White | 0 | Wh | PP | | 14 | 224 | 8.42 | 6.47 | 6.17 |
| H2000 Series | | (non-stock) | | | | | | | | |
| IH2260 | 26L Ribbed Solid Base/side | Nat/ Or/ Blu/ Red/ | Nat/ Grn/ Red | PP, SA/NT | IH2000/1/10 | 5 | 180 | 26.46 | 20.97 | 19.80 |
| IH2267 | 26L Ribbed Ventilated Base | 578 x 384 x 166 | Nat/ Grn | PP, SA/NT | IH2000/1/10 | 5 | 180 | 27.01 | 20.97 | 19.80 |
| IH2520 | 52L Ribbed Solid Base | 578 x 384 x 318 | Nat/ Blu | PP, SA/NT | IH2000/1/10 | 5 | 108 | 32.40 | 25.15 | 23.74 |
| IH2527 | 52L Ventilated Sides/Base/Ends | 578 x 384 x 318 | Nat/ Blu | PP, SA/NT | IH2000/1/10 | 5 | 108 | 32.40 | 25.15 | 23.74 |
| IH2780 | 78L Ribbed Solid Base | 578 x 384 x 470 | Nat/ Blu | PP, SA/NT | IH2000/1/10 | 5 | 90 | 54.64 | 42.43 | 40.05 |
| IH2000 | Drop on Lid to suit H2260/2780 | 578 x 384 | Nat | PP | | 20 | 460 | 17.62 | 13.68 | 12.92 |
| IH2001 | Hinged Lid to suit H2260/2780 | 578 x 384 | Nat | PP | | 20 | 460 | 16.21 | 12.35 | 11.55 |
| IH2010 | Security Winged Lid to suit H2260/2780 | 578 x 230 | Nat | PP | | 30 | 300 | 16.21 | 12.35 | 11.55 |
| Folding Crates | | (limited stock) | | | | | | | | |
| VE129 | 12L Folding Crate | 385 x 289 x 129 FH34 | Gry | PP, SA | | 5 | 372 | 18.03 | 14.85 | 14.42 |
| VB172 | 33L Folding Crate | 578 x 385 x 172 FH34 | Gry | PP, SA | | 5 | 186 | 28.16 | 21.29 | 20.68 |
| VC210 | 41L Folding Crate | 578 x 385 x 210 FH34 | Gry | PP, SA | | 5 | 186 | 32.18 | 25.07 | 24.08 |



Delivery Perth Nominated metro areas - \$30+gst.

Outer metro/ regions - nominate your freight company or ask for a quote. *Prices and delivery areas subject to change.

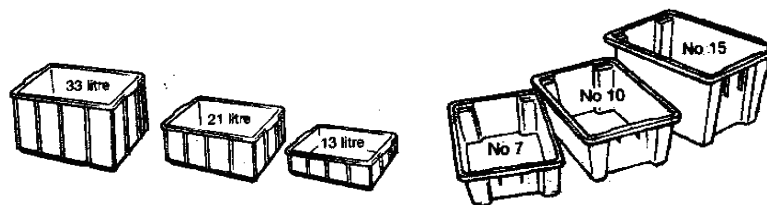
WHOLESALE PRICE LIST: 27 May 2022 (**EX PERTH)

PRICES GST EXCLUSIVE

APLUS OKKA CRATES

CRATES (APLUS/ OKKA)

| Code | Description | Ext mm L x W x H | Avail Colour | Mat & Feat | Lid | Qty | | Price | | |
|------------------------------|----------------------------|-------------------------|----------------------------------|------------|----------------|------|--------|-------|-------|--------|
| | | | | | | Pack | Pallet | Piece | Pack | Pallet |
| Stack and Nest Crates | | (stock items) | | | | | | | | |
| AP7RBLK IH060 | 32L No 7 Crate, Solid | 1 | Rec Black | PP, SA/NT | AP71015 LidRec | 5 | 70 | 11.99 | 8.79 | 8.57 |
| AP7NAT IH060 | 32L No 7 Crate, Solid | 1 | Blu/ Red/ Nat Gry/ Grn/ Yel | PP, SA/NT | AP71015 LidNat | 5 | 70 | 17.79 | 13.04 | 12.71 |
| AP10RBLK IH051 | 52L No10 Crate Recycled | 1 | Rec Black | PP, SA/NT | AP71015 LidRec | 5 | 120 | 13.07 | 9.58 | 9.34 |
| AP10NAT IH051 | 52L No 10 Crate | 1 | Blu/ Red/ Nat Gry/ Grn/ Yel | PP, SA/NT | AP71015 LidNat | 5 | 120 | 20.61 | 15.10 | 14.72 |
| AP15RBLK IH078 | 68.2L No15 Crate Recycled | 1 | Rec Black | PP, SA/NT | AP71015 LidRec | 5 | 60 | 29.74 | 21.79 | 21.24 |
| AP15NAT IH078 | 68.2L No15 Crate | 1 | Blu/ Red/ Nat Gry/ Grn/ Yel | PP, SA/NT | AP71015 LidNat | 5 | 60 | 33.57 | 24.60 | 23.98 |
| AP71015LidRec IH052 | Pilfer Proof Lid Recycled | 1 | Black | PP | | 10 | 200 | 7.81 | 5.72 | 5.58 |
| AP71015LidNat IH052 | Pilfer Proof Lid Natural | 1 | Natural FG | PP | | 10 | 200 | 9.87 | 7.23 | 7.05 |
| Tote Boxes | | | | | | | | | | |
| AP13WH IH305 | Small Stacking Tote - 13L | 1 | Wh | PP, SA | APTote Lid | 5 | 120 | 8.81 | 6.45 | 6.29 |
| AP22WH IH306 | Medium Stacking Tote - 22L | 1.08kg 436 x 324 214 | Wh | PP, SA | APTote Lid | 5 | 72 | 14.26 | 10.45 | 10.19 |
| AP32WH IH307 | Large Stacking Tote - 32L | 1.393kg 436 x 324 x 303 | Wh | PP, SA | APTote Lid | 5 | 48 | 19.09 | 13.99 | 13.64 |
| APToteLidWh IH308 | Stacking Tote Lid White | | Wh | PP | | 20 | 720 | 5.83 | 4.27 | 4.16 |
| Nesting Crates | | (non-stock) | | | | | | | | |
| AP4NAT IH089 | 13.5L Nesting Crate | 1 | Nat/ Blu/ Red/ Blk/ Wh/ Ylw/ Grn | PP, NT | AP4Lid | 5 | 240 | 8.21 | 6.02 | 5.87 |
| AP4DNAT | 22L Deep Nesting Crate | 1 | Nat/ Blu/ Red/ Blk/ Wh/ Ylw/ Grn | PP, NT | AP4Lid | 5 | 240 | 9.69 | 7.10 | 6.92 |
| AP5 | 22L Nesting Crate | 0.914Kg 540 x 380 x 137 | Nat | PP, NT | AP5Lid NAT | 5 | 180 | 14.12 | 10.35 | 10.09 |
| AP5LIDNAT | 22L Nesting Crate Lid | 0.580kg 550 x 388 x 35 | Nat | PP, SA | | 5 | 180 | 8.87 | 6.50 | 6.34 |
| AP4LidNAT | Nesting Crate Lid | 1 | Nat/ Blk | PP, SA | | 20 | 240 | 6.17 | 4.52 | 4.40 |



Delivery Perth Nominated metro areas - \$30+gst.

Outer metro/ regions - nominate your freight company or ask for a quote. *Prices and delivery areas subject to change.

CRATES (APLUS/ OKKA)

APLUS TECH BINS

| Code | Description | Ext mm L x W x H | Avail Colour | Mat & Feat | Lid | Qty | | Price | | |
|---|------------------------------------|------------------|--------------|------------|----------------------------|------|--------|-------|-------|--------|
| | | | | | | Pack | Pallet | Piece | Pack | Pallet |
| Utility Bins | | | | | | | | | | |
| APT12GRY | Tech Tray Gray 322x100x100 | 322 x 100 x 100 | Gry | PP | APTBDiv 12/17/27 GRY | 24 | | 4.48 | 3.28 | |
| APT17GRY | Tech Tray Gray 422x100x100 | 422 x 100 x 100 | Gry | PP | APTBDiv 12/17/27 GRY | 24 | | 5.14 | 3.76 | |
| APT24GRY | Tech Tray Gray 322x200x100 | 322 x 200 x 100 | Gry | PP | APTBDiv 24/25/28 GRY | 12 | | 6.62 | 4.85 | |
| APT25GRY | Tech Tray Gray 422x200x100 | 422 x 200 x 100 | Gry | PP | APTBDiv 24/25/28 GRY | 12 | | 8.44 | 6.18 | |
| APT27GRY | Tech Tray Gray 626x100x100 | 626 x 100 x 100 | Gry | PP | APTBDiv 12/17/27 GRY | 12 | | 8.18 | 5.99 | |
| APT28GRAY | Tech Tray Grey 626x200x100 | 626 x 200 x 100 | Gry | PP | APTBDiv 24/25/28 GRY | 12 | | 12.16 | 8.91 | |
| APTBDiv12/17/27GRY | Divider to Suit 100mm Tech Tray | 93 x 6 x 96 | Gry | PP | | 40 | | 0.37 | 0.27 | |
| APTBDiv24/25/28GRY | Divider to Suit 200mm Tech Tray | 192 x 6 x 96 | Gry | PP | | 20 | | 0.69 | 0.51 | |
| Dividers are not provided with Utility Bins | | | | | | | | | | |
| Micro Bins | | | | | | | | | | |
| APT5BLU | Tech Bin Blue 118x100x60 | 118 x 100 x 60 | Blu | PP | | 12 | 2016 | 1.45 | 1.06 | 1.04 |
| APT10 | Tech Bin Blue 177x100x85 | 177 x 100 x 85 | Blu | PP | | 6 | 1008 | 2.51 | 1.84 | 1.79 |
| APT20 | Tech Bin Blue 230x134x125 | 230 x 134 x 125 | Blu | PP | | 6 | 504 | 3.75 | 2.75 | 2.68 |
| APT30 | Tech Bin Blue 280x204x164 | 280 x 204 x 164 | Blu | PP | APTBDiv 30/40 | 6 | 204 | 6.81 | 4.99 | 4.86 |
| APT40BLU | Tech Bin Blue 280x410x164 | 280 x 410 x 164 | Blu | PP | APTBDiv 30/40 | 5 | 80 | 10.56 | 7.74 | 7.54 |
| APT60BLU | Tech Bin Blue 458x414x215 | 458 x 414 x 215 | Blu | PP | APTBDiv 60BLU | 5 | 72 | 20.22 | 14.82 | 14.44 |
| APTBDiv30/40 | Divider Blue to Suit TB30/TB40 | 250 x 7 x 141 | Blu | PP | | 30 | 5760 | 2.11 | 1.55 | 1.51 |
| APTBDiv60BLU | Divider Blue to Suit TB60 | 413 x 7 x 196 | Blu | PP | | 20 | 2160 | 3.32 | 2.43 | 2.37 |
| Dividers are not provided with Micro Bins | | | | | | | | | | |

WHOLESALE PRICE LIST: 27 May 2022 (**EX PERTH)

PRICES GST EXCLUSIVE

CRATES (NALLY / VISCOUNT) (grey shaded = popular item)

| Code | Description | Ext mm L x W x H | Avail Colour | Mat & Feat | Lid | Qty | | Price | | |
|----------|--|---------------------|--------------------|------------|-------|------|--------|--------|--------|--------|
| | | | | | | Pack | Pallet | Piece | Pack | Pallet |
| IH004BEI | 84L Crate Ventilated | 585 x 522 x 350 | Bei | PP, NT | | 5 | 40 | 50.46 | 39.17 | 36.98 |
| IH014NAT | Lid to suit No 4 Crate IH089 | 440 x 332 x 20 | Nat | HD | | 20 | 480 | 14.06 | 10.91 | 10.30 |
| IH015NAT | Lid to suit No 5 Crate IH059 | 546 x 392 x 25 | Nat | HD | | 20 | 360 | 18.15 | 14.10 | 13.31 |
| IH016GRY | 23L Ventilated Crate | 580 x 380 x 175 | Gry | HD, SA/NT | | 5 | 198 | 43.59 | 33.84 | 31.95 |
| IH017GRY | 20L Heavy Duty Crate, Solid Sides, Base Drainage Holes | 400 x 280 x 245 | Gry | PP, SA | | 5 | 120 | 46.73 | 36.28 | 34.25 |
| IH024GRY | 25L Container Solid | 580 x 380 x 166 | Gry | PP, SA | | 5 | 90 | 53.22 | 41.32 | 39.01 |
| IH025GRY | 25L Solid Sides Ventilated Base | 580 x 380 x 166 | Gry | PP, SA | | 5 | 90 | 53.22 | 41.32 | 39.01 |
| IH026GRY | 50L Solid Sides Ventilated Base | 580 x 385 x 320 | Gry | PP, SA | | 5 | 54 | 79.25 | 61.53 | 58.08 |
| IH027GRY | 50L Solid Sides Ventilated Base Side Access | 580 x 385 x 320 | Gry | PP, SA | | 5 | 73 | 80.91 | 62.82 | 59.30 |
| IH037ORG | 44L Ventilated Crate | 538 x 362 x 334 | Org | HD, SA | | 5 | 60 | 60.39 | 46.89 | 44.26 |
| IH042 | 27L Extended Model 30 Crate, Solid | 457 x 318 x 260 | Nat/ Blu/ Red | PP, NT | IH158 | 5 | 240 | 34.57 | 26.84 | 25.34 |
| IH044 | 20L Model 25 Crate, Solid | 584 x 267 x 178 | Nat/ Red | PP, SA/NT | | 5 | 240 | 34.57 | 26.84 | 25.38 |
| IH046 | 46L Model 10 Crate, Solid | 629 x 400 x 216 | Nat/ Red | HD, SA | | 5 | 72 | 79.36 | 61.62 | 58.15 |
| IH047 | 21L Model 90 Crate, Solid | 660 x 334 x 121 | Nat/ Blk | PP, SA | | 5 | 120 | 33.02 | 25.64 | 24.20 |
| IH048 | 16L Model 30 Crate, Solid | 457 x 318 x 165 | Nat/ Blu/ Red | PP, NT | IH158 | 5 | 280 | 26.69 | 20.72 | 19.56 |
| IH059NAT | 22L No 5 Crate, Solid, Smooth Base | 527 x 381 x 140 | Nat/ Or/ Blu/ Red/ | PP, NT | IH015 | 5 | 180 | 12.84 | 12.57 | 9.22 |
| IH065NAT | 55L No 12 Crate Ventilated Base | 711 x 438 x 382 | Nat | HD, SA/NT | | 5 | 80 | 80.32 | 62.36 | 56.16 |
| IH066 | 55L No 12 Crate Solid Base | 711 x 438 x 382 | Nat/ Red | HD, SA/NT | | 5 | 80 | 87.47 | 67.91 | 58.55 |
| IH068NAT | 118L Stakanesta Crate | 950 x 460 x 435 | Nat | HD, SA/NT | | 5 | 48 | 180.04 | 139.78 | 131.96 |
| IH072NAT | 36L No 8 Crate Solid | 565 x 387 x 203 | Nat | HD, SA | | 5 | 72 | 46.15 | 35.83 | 33.83 |
| IH073NAT | 36L No 8 Crate Mesh Base | 565 x 387 x 203 | Nat | HD, SA | | 5 | 72 | 47.12 | 36.59 | 34.54 |
| IH077NAT | 11L Liver Tray Solid | 514 x 213 x 130 | Nat | HD, NT | | 5 | 36 | 28.15 | 21.85 | 20.63 |
| IH089NAT | 13.5L No 4 Crate | 430 x 323 x 127 | Nat/ Or/ Blu | HD, NT | IH014 | 5 | 240 | 10.84 | 8.41 | 7.94 |
| IH090 | 32L Lug Box Solid | 575 x 400 x 215 | Nat/ Gry | HD, SA/NT | | 5 | 180 | 39.19 | 30.43 | 28.73 |
| IH091NAT | 54L Meat Tub Solid | 700 x 600 x 340 | Nat | HD, NT | | 5 | 54 | 142.51 | 117.05 | 101.79 |
| IH095NAT | 32L Transporter Crate Mesh Base | 642 x 480 x 156 | Nat | HDPE | | 5 | 200 | 43.01 | 39.01 | 28.16 |
| IH098YLW | 50L Ventilated Crate | 572 x 382 x 318 | Yellow | HD, SA | | 5 | 60 | 77.89 | 60.47 | 57.08 |
| IH099BLU | 29L Slab Sided Crate | 356 x 356 x 292 | Blu | PP, SA | | 5 | 72 | 19.03 | 14.78 | 13.95 |
| IH158NAT | Lid to suit IH042/48 | 465 x 325 | Nat | PP | | 20 | 800 | 14.20 | 11.03 | 10.41 |

CRATES



Delivery Perth Nominated metro areas - \$50/leg.

Outer metro/ regions - nominate your freight company or ask for a quote. *Prices and delivery areas subject to change.

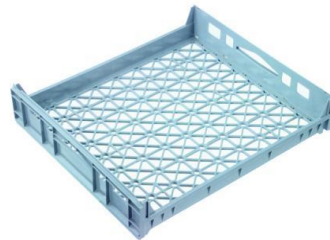
WHOLESALE PRICE LIST: 27 May 2022 (EX PERTH)**

PRICES GST EXCLUSIVE

CRATES

CRATES (NALLY / VISCOUNT (grey shaded = popular item)

| Code | Description | Ext mm L x W x H | Avail Colour | Mat & Feat | Lid | Qty | | Price | | |
|-----------------------|-------------------------------------|---------------------|-----------------|---------------|-------|------|--------|--------|-------|--------|
| | | | | | | Pack | Pallet | Piece | Pack | Pallet |
| IH220NAT | 42L Large Tote Box (was IH020) | 520 x 350 x 280 | Nat | PP, SA | IH221 | 5 | 72 | 58.71 | 54.49 | 43.03 |
| IH221NAT | Lid to suit IH220 (was IH021) | 525 x 350 | Nat | PP | | 25 | 288 | 22.33 | 17.34 | 16.37 |
| IH300 | 66L Lug Box | 610 x 419 x 312 | Blu/ Or | HD, SA | | 5 | 40 | 41.67 | 32.35 | 30.54 |
| IH310CLR | 10L Solid Crate | 385 x 300 x 130 | Clear | PP, NT | | | | 15.10 | | |
| IH315CLR | 15L Solid Crate | 385 x 300 x 190 | Clear | PP, NT | | 5 | 480 | 22.51 | 18.59 | 17.55 |
| IH954 | 80L Chicken Crate | 735 x 535 x 305 | Gry/ Or | HD, SA | | 5 | 27 | 126.36 | 98.10 | 92.61 |
| IH984GRY | 44L Ventilated Base | 735 x 535 x 150 | Gry | HD, SA | | 5 | 324 | 82.51 | 64.06 | 60.47 |
| Trays | | | | | | | | | | |
| IH006NAT | Confectionery Tray Mesh Base - 29L | 712 x 448 x 95 | Nat | PP, SA | | 5 | 112 | 43.27 | 33.60 | 31.71 |
| IH007NAT | Confectionery Tray Solid Base - 29L | 712 x 448 x 95 | Nat | PP, SA | | 5 | 112 | 43.27 | 33.60 | 21.78 |
| IH008WH | Commercial Tray Solid Base | 455 x 343 x 32 | Wh | SY, NT | | 30 | 120 | 24.60 | 19.10 | 18.03 |
| IH009WH | Small Tray Solid Base | 456 x 318 x 57 | Wh | PP, NT | | 30 | 120 | 19.41 | 15.07 | 14.22 |
| IH012BLK | Seedling Tray Mesh Base - 11L | 357 x 357 x 112 | Blk | PP, SA | | 5 | 207 | 20.70 | 16.07 | 15.17 |
| Produce Crates | | | | | | | | | | |
| IH506 | 22L Crate Open Crate | 525 x 336 | Or/ Grn | PP, SA/NT | | 5 | 120 | 30.02 | 23.31 | 22.00 |
| IH512 | 36L Crate Open Crate | 525 x 336 | Or/ Grn | PP, SA/NT | | 5 | 120 | 35.32 | 27.42 | 25.88 |
| IH518 | 84L Crate Open Crate | 740 x 422 | Or/ Grn | PP, SA/NT | | | 240 | 65.25 | | 47.82 |
| IH001GRY | 15.5L Ventilated Prawn Crate | 600 x 352 x 96 | Gry | HD, NT | IH002 | 5 | 240 | 23.86 | 18.52 | 17.48 |
| IH002GRY | Lid to suit IH001 Prawn Crate | 610 x 360 | Gry | HD | | 25 | 240 | 17.91 | 13.90 | 13.13 |
| MILKBLK | Milk Crate | 360 x 360 x 324 | Blk | PP, SA | | | | 13.40 | 9.78 | 9.51 |
| BC | Bread Crate | 694 x 604 x 152 | Gry | PP, SA/NT | | 30 | 360 | 18.70 | 14.34 | 14.04 |



Delivery Perth Nominated metro areas - \$30+gst.

Outer metro/ regions - nominate your freight company or ask for a quote. *Prices and delivery areas subject to change.

WHOLESALE PRICE LIST: 27 May 2022 (**EX PERTH)

PRICES GST EXCLUSIVE

| PAIS - SMALL - 1 TO 5 LITRES (stock items) | | | | | | |
|---|---------------------------|----------|------------|-------------|-------------|--------------|
| Product | Code | Pack Qty | Pallet Qty | Piece Price | Pack Price | Pallet Price |
| 800ml | NCI Pail | | | | | |
| Pail only | NCIP.8LWH | 144 | 2592 | 1.10 | 0.80 | 0.70 |
| Lid only | NCIL.8/1.2LWH | 144 | 2592 | 0.35 | 0.24 | 0.25 |
| <i>(Int Dia 124mm, Ext Dia 132mm, Ht 102mm)</i> | | | | 1.45 | 1.04 | 0.95 |
| 1.2 litre | NCI Pail | | | | | |
| Pail only | NCIP1.2LWH | 144 | 2592 | 1.34 | 0.97 | 0.85 |
| Lid only | NCIL.8/1.2LWH | 144 | 2592 | 0.35 | 0.24 | 0.25 |
| <i>(Int Dia 124mm, Ext Dia 132mm, Ht 148mm)</i> | | | | 1.69 | 1.21 | 1.10 |
| 2.2 litre | NCI Pail | | | | | |
| Pail only | NCIP2.2LWH | 120 | 1920 | 1.67 | 1.22 | 1.07 |
| Lid only | NCIL2.2LWH | 120 | 1920 | 0.49 | 0.35 | 0.31 |
| <i>(Int Dia 165mm, Ext Dia 173mm, Ht 146mm)</i> | | | | 2.16 | 1.57 | 1.38 |
| 3.4 litre | NCI Pail | | | | | |
| Pail only | NCIP3.4LWH | 70 | 840 | 3.32 | 2.42 | 2.12 |
| Lid only | NCIL3.4LWH | 70 | 840 | 1.04 | 0.75 | 0.66 |
| <i>(Int Dia 172mm, Ext Dia 187mm, Ht 185mm)</i> | | | | 4.36 | 3.17 | 2.78 |
| 4 litre | Baroda Pail | | | | | |
| Pail only | RP4LWH | 102 | 1224 | 2.42 | 1.61 | 1.41 |
| Lid only | RL4LWH | 102 | 1224 | 0.72 | 0.48 | 0.42 |
| <i>(Int Dia 198mm, Ext Dia 204mm, Ht 181mm)</i> | | | | 3.14 | 2.09 | 1.83 |
| 4 litre | NCI Pail | | | | | |
| Pail only | NCIP4LWH | 70 | 840 | 3.19 | 2.26 | 1.97 |
| Lid only | NCIL4LWH | 70 | 840 | 1.20 | 0.85 | 0.74 |
| <i>(Int Dia 173mm, Ext Dia 215mm, Ht 184mm)</i> | | | | 4.39 | 3.11 | 2.71 |
| 4 litre (Dangerous Goods Approved) | VIP Safe Seal Pail | | | | | |
| Pail only | RP4LWHSS | 42 | 504 | 5.56 | 3.71 | 3.24 |
| Lid only | RL4LWHSS | 84 | 504 | 2.17 | 1.44 | 1.26 |
| <i>(Int Dia 160mm, Ext Dia 194mm, Ht 225mm)</i> | | | | 7.73 | 5.15 | 4.50 |
| 5 litre | Baroda Pail | | | | | |
| Pail only | RP5LWH | 54 | 864 | 2.94 | 1.80 | 1.57 |
| Lid only | RL5LWH | 54 | 864 | 0.79 | 0.54 | 0.47 |
| <i>(Int Dia 216mm, Ext Dia 225mm, Ht 198mm)</i> | | | | 3.73 | 2.34 | 2.04 |
| 5 litre | NCI Pail | | | | | |
| Pail only | NCIP5LWHPH | 72 | 864 | 3.30 | 2.41 | 2.10 |
| Lid only | NCIL5LWH | 72 | 864 | 1.18 | 0.84 | 0.74 |
| <i>(Int Dia 191mm, Ext Dia 219mm, Ht 195mm)</i> | | | | 4.48 | 3.25 | 2.84 |

PAIS - 1 to 5 LITRES

All Pails and Lids stocked in White

PAILS - 10 to 25 LITRES

WHOLESALE PRICE LIST: 27 May 2022 (EX PERTH)**

PRICES GST EXCLUSIVE

PAILS - LARGE - 10 TO 25 LITRES

(stock items)

| Product | Code | Pack Qty | Pallet Qty | Piece Price | Pack Price | Pallet Price |
|---|---------------------------|----------------------|------------|--------------|--------------|--------------|
| 10 litre (WH) | Baroda Pail | | | | | |
| Pail only | BP10LWH | 20 | 320 | 4.70 | 3.13 | 2.74 |
| Lid only | BL10LWH | 20 | 320 | 1.12 | 1.05 | 0.92 |
| <i>(Int Dia 242mm, Ext Dia 285mm, Ht 241mm)</i> | | | | 5.82 | 4.18 | 3.66 |
| 10 litre (WH) | NCI Pail | | | | | |
| Pail only | NCIP10LWH | 30 | 480 | 5.36 | 3.95 | 3.45 |
| Lid only | NCIL10LWH | 30 | 480 | 2.50 | 1.84 | 1.56 |
| <i>(Int Dia 244mm, Ext Dia 286mm, Ht 240mm)</i> | | | | 7.86 | 5.79 | 5.01 |
| 10 litre (Dangerous Goods Approved) (WH) | VIP Safe Seal Pail | | | | | |
| Pail only | RP10LWHSS | 18 | 288 | 8.07 | 5.68 | 5.05 |
| Lid only | RL10LWHSS | 18 | 288 | 3.17 | 2.11 | 1.85 |
| <i>(Int Dia 235mm, Ext Dia 278mm, Ht 262mm)</i> | | | | 11.24 | 7.79 | 6.90 |
| 15 litre (NAT ONLY) | Viscount Pail | | | | | |
| Pail only | VP15LNAT | 15 | 240 | 6.81 | 4.93 | 4.16 |
| Lid only | VL15L&20LNAT | 15 | 240 | 2.45 | 1.75 | 1.53 |
| <i>(Int Dia 256mm, Ext Dia 305mm, Ht 311mm)</i> | | | | 9.26 | 6.68 | 5.69 |
| 15 litre (WH) | NCI Pail | Or/ Blu/ Red/ | | | | |
| Pail only | NCIP15LWH | 30 | 420 | 7.11 | 5.18 | 4.53 |
| Lid only | NCIL15LWH | 30 | 420 | 2.58 | 1.82 | 1.88 |
| <i>(Int Dia 260mm, Ext Dia 303mm, Ht 316mm)</i> | | | | 9.69 | 7.00 | 6.41 |
| 20 litre (WH/NAT) | VIP GP Pail | | | | | |
| Pail only | RP20LWHGP | 9 | 144 | 8.37 | 5.57 | 4.31 |
| Lid only | RL20LWHGP | 9 | 144 | 2.04 | 1.36 | 1.19 |
| <i>(Int Dia 254mm, Ext Dia 302mm, Ht 412mm)</i> | | | | 10.41 | 6.93 | 5.50 |
| 20 litre (WH) | NCI Pail | | | | | |
| Pail only | NCIP20LWH | 20 | 280 | 9.39 | 6.16 | 5.39 |
| Lid only | NCIL20LWH | 20 | 280 | 2.74 | 1.75 | 2.00 |
| <i>(Int Dia 260mm, Ext Dia 306mm, Ht 390mm)</i> | | | | 12.13 | 7.91 | 7.39 |
| 20 litre (Dangerous Goods Approved) (WH) | VIP Safe Seal Pail | | | | | |
| Pail only | RP20LWHSS | 9 | 144 | 13.43 | 7.89 | 6.90 |
| Lid only | RL15L&20LWHSS | 9 | 144 | 4.45 | 2.96 | 2.58 |
| <i>(Int Dia 260mm, Ext Dia 305mm, Ht 406mm)</i> | | | | 17.88 | 10.85 | 9.48 |
| 25 litre (with drilled bung hole) (WH) | VIP GP Pail | | | | | |
| Pail only | RP25LWHGP | 8 | 72 | 19.97 | 13.28 | 11.61 |
| Lid only | RL25LWHGP | 8 | 72 | 5.19 | 3.70 | 3.24 |
| | | | | 25.16 | 16.98 | 14.85 |

All Pails and Lids stocked in White. Natural stock noted above.

NCI Pails available in Natural - Pallet Quantities Only

NCI Lids available in Red, Blue, Green, Yellow and Black - Carton Quantities Only, call for information

PAIL ACCESSORIES

(stock items)

| Product | Code | Price |
|------------------------------|-----------|-------|
| PLASTIC LID OPENER | | |
| Plastic Lid Opener for Pails | LIDOPENER | 7.08 |



Delivery Perth Nominated metro areas - \$30+gst.

Outer metro/ regions - nominate your freight company or ask for a quote. *Prices and delivery areas subject to change.

WHOLESALE PRICE LIST: 27 May 2022 (EX PERTH)**

PRICES GST EXCLUSIVE

SQUARE PAILS (WHITE ONLY) (stock items)

| Product | Code | Pack Qty | Pallet Qty | Piece Price | Pack Price | Pallet Price |
|---|--|----------|--------------|--------------|--------------|--------------|
| 5 litre Square w/lid (WH) Pail & Lid (Ext 170mm x 170mm, Ht 220mm) | Western High Pail WHP5LFBSQRPAIL | 42 | 900 | 5.29 | 3.94 | 3.52 |
| | | | | 5.29 | 3.94 | 3.52 |
| 10 litre Square Pail only Lid only (Ext 230mm x 230mm, Ht 300mm) | Viscount Pail VP10LSQWH | 10 | 250 | 8.03 | 5.59 | 4.70 |
| | VL10LSQWH | 10 | 250 | 2.77 | 2.01 | 1.70 |
| | | | | 10.80 | 7.60 | 6.40 |
| 15 litre Square Pail only Lid with gasket (Ext 270mm x 270mm, Ht 320mm) | Baroda Pail RP15LSQWH | 12 | 192 | 12.32 | 8.19 | 7.16 |
| | RL15LSQWH | 12 | 192 | 4.05 | 2.69 | 2.35 |
| | | | | 16.37 | 10.88 | 9.51 |
| 20 litre Square Pail only Lid with gasket Lid without gasket (Ext 270mm x 270mm, Ht 390mm) | Viscount Pail VP20LSQWH | 15 | 240 | 13.17 | 9.55 | 7.77 |
| | VL20LSQWHG | 15 | 240 | 4.40 | 3.16 | 2.73 |
| | | | | 17.57 | 12.71 | 10.50 |
| | VL20LSQWHNG | 15 | 240 | 3.74 | 2.59 | 2.27 |
| | | | 16.91 | 15.30 | 12.77 | |

PAILS - SQUARE



PAILS - BULK BUY ONLY (PALLET)

| Product | Code | Pack Qty | Pallet Qty | | | Pallet Price |
|--|---------------------------------|-------------|------------|--|--|--------------|
| 4 litre Pail only (metal handle) Lid only (Int Dia 173mm, Ext Dia 209mm, Ht 190mm) | Viscount Pail VP4LWH | (plt stock) | 480 | | | 1.62 |
| | VL4LWH | | 480 | | | 0.60 |
| | | | | | | 2.22 |
| 10 litre (WH) Pail only Lid only (Int Dia 226mm, Ext Dia 276mm, Ht 266mm) | Viscount Pail VP10LWH | (plt stock) | 336 | | | 3.50 |
| | VL10LWH | | 1008 | | | 1.21 |
| | | | | | | 4.71 |

Delivery Perth Nominated metro areas - \$30+gst.

Outer metro/ regions - nominate your freight company or ask for a quote. *Prices and delivery areas subject to change.

CUBES

WHOLESALE PRICE LIST: 27 May 2022 (**EX PERTH)

PRICES GST EXCLUSIVE

| CUBES (NO CAP) (stock items) | | | | | | |
|--|--------------|----------|------------|-------------|------------|--------------|
| Product | Code | Pack Qty | Pallet Qty | Piece Price | Pack Price | Pallet Price |
| 10 litre Standard NATURAL* (230x230x300) | CB10LNATSWA | 10 | 100 | 11.25 | 8.03 | 7.03 |
| 15 litre Standard NATURAL (230x230x420) | CB15LNATSWA | 10 | 100 | 10.61 | 7.58 | 6.63 |
| 15 litre Dangerous Goods BLACK† (230x230x420) | CB15LBLKDGWA | 10 | 100 | 11.45 | 8.30 | 7.16 |
| 20 litre Standard NATURAL‡ (280x280x370) | CB20LNATSWA | 10 | 48 | 9.55 | 6.92 | 5.97 |
| 20 litre Dangerous Goods BLACK† (280x280x370) | CB20LBLKDGWA | 10 | 48 | 11.45 | 8.30 | 7.16 |
| 25 litre Standard & Dangerous Goods BLACK† (280x280x440) | CB25LBLKDGWA | 10 | 64 | 12.36 | 8.83 | 7.72 |

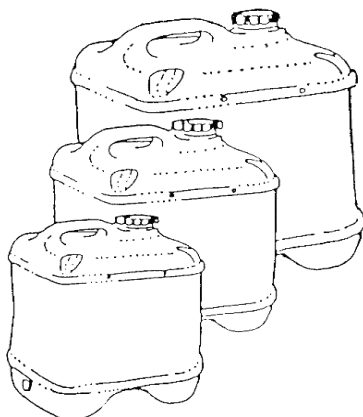
* White avail - full pallet qty only

‡ Black, White avail - full pallet qty only

† Natural avail - full pallet qty only

Nat/ Or/ Blu/ Red/

| CUBE ACCESSORIES (stock items) | | | | | |
|-------------------------------------|-------------|----------|--|-------------|------------|
| Product | Code | Pack Qty | | Piece Price | Pack Price |
| CAPS | | | | | |
| 58mm Standard cube cap | CAP58MMBLK | 460 | | 0.40 | 0.35 |
| 58mm Vented cube cap | CAP58MMVBLU | 440 | | 0.90 | 0.64 |
| 58mm Pourmate cube cap | POURMATE | 200 | | 3.50 | 2.50 |
| 58mm Pourspout cube | POURSPOUT | | | 2.03 | |
| 58mm Gasket | GASK58MM | 1000 | | 0.15 | 0.10 |
| TAPS / PUMPS / BUNGS / TOOLS | | | | | |
| 20mm Black Taps | TAP20MMBLK | 500 | | 0.90 | 0.66 |
| 58mm Tap in a Cap | TAPIAC | 20 | | 5.50 | 4.50 |
| 20mm Blue Snap Tap Alplas | TAP20MMSBLU | | | 4.87 | |
| 20mm Jumbo Tap Alplas | TAP20MMJUM | | | 4.00 | |
| 3/4inch Rieke Drum Tap | TAP3/4inch | | | 2.57 | |
| 20mm Aeroflow Tap Alplas | TAPAFL | | | 4.29 | |
| 12mm Quick Serve Tap Alplas | TAPQS12 | | | 3.74 | |
| 8mm Quick Serve Tap Alplas | TAPQS8 | | | 3.74 | |
| Locking Nut for 20mm Taps | TAPNUT | | | 0.72 | |
| Washer for Quick Serve Taps | TAPWASHER | | | 0.14 | |
| 58mm Lotion Pump 30ml | PUMP58MM30 | | | 7.87 | |
| 20mm Bung | BUNG20MM | 3500 | | 0.36 | 0.21 |
| 58mm RED Cube Cap Spanner | SPANNER | 200 | | 3.00 | 1.43 |



TAPIAC



TAP20MMSBLU



Delivery Perth Nominated metro areas - \$30+gst.

Outer metro/ regions - nominate your freight company or ask for a quote. *Prices and delivery areas subject to change.

WHOLESALE PRICE LIST: 27 May 2022 (EX PERTH)**

PRICES GST EXCLUSIVE

| JERRY CANS (NO CAP) (stock items) | | Pack Qty | Pallet Qty | Piece Price | Pack Price | Pallet Price |
|--|--------------|----------|------------|-------------|------------|--------------|
| Product | Code | | | | | |
| 1 litre Standard NATURAL (120x70x170) | JC1LNATSWA | 1632 | 136 | 1.18 | 1.03 | 0.79 |
| 2.5 litre Standard NATURAL (150x90x250) | JC2.5LNATSWA | 54 | 648 | 2.48 | 1.65 | 1.44 |
| 4 litre Standard NATURAL (175x120x250) | JC4LNATSWA | 36 | 432 | 2.50 | 1.67 | 1.46 |
| 5 litre Standard NATURAL (180x140x290) (264 on pallet if cartoned) | JC5LNATSWA | 22 | 240 | 1.89 | 1.37 | 1.18 |
| 5 litre Dangerous Goods NATURAL (180x140x290) | JC5LNATDGWA | 22 | 240 | 1.99 | 1.44 | 1.25 |
| 10 litre Standard NATURAL (230x165x390) | JC10LNATS | 10 | 120 | 8.88 | 5.90 | 5.16 |

JERRY & FUEL CANS

| JERRY CAN ACCESSORIES (stock items) | | Pack Qty | Piece Price | Pack Price |
|---|----------------|----------|-------------|------------|
| Product | Code | | | |
| CAPS | | | | |
| 38mm ACI Jerry Can Cap (Red) | CAP38MMACIR | 1000 | 0.39 | 0.22 |
| 38mm Vented Jerry Can Cap (Blue) | CAP38MMVBLU | 1700 | 0.45 | 0.32 |
| 38mm Child Resistant Jerry Can Cap (Red) | CAP38MMARCOERR | 450 | 0.35 | 0.30 |
| <i>Colours available in carton quantities</i> | | | | |
| TAPS / PUMPS | | | | |
| 38mm Tap in a Cap Alplas | TAP38MMIAC | 20 | 4.08 | 3.06 |
| 38mm Lotion Pump LONGER STEM | PUMP38MM8PB | 400 | 3.12 | 2.23 |
| 38mm Lotion Pump 30cc | PUMP38MM30 | | 7.20 | |

| FUEL CANS & WATER CANS (stock items) | | Pack Qty | Pallet Qty | Piece Price | Pack Price | Pallet Price |
|---|--------------|----------|------------|-------------|------------|--------------|
| Product | Code | | | | | |
| 5 litre Gas Fuel Can RED (250x155x234) | FC5LRED | 8 | 192 | 16.64 | 12.53 | 11.24 |
| 10 litre Gas Fuel Can RED (250x155x365) | FC10LRED | 8 | 128 | 23.15 | 17.51 | 15.73 |
| 20 litre Gas Fuel Can RED (348x179x460) | FC20LGASRED | 4 | 64 | 38.11 | 29.16 | 26.33 |
| 20 litre Diesel Fuel Can YELLOW (348x179x460) | FC20LDIESELY | 4 | 64 | 38.31 | 29.30 | 26.46 |
| 20 litre Water Can OLIVE (348x179x460) | WC20LOLIVE | 4 | 64 | 36.74 | 27.96 | 25.19 |



DRUMS

WHOLESALE PRICE LIST: 27 May 2022 (**EX PERTH)

ALL PRICES ARE GST EXCLUSIVE

CARBOYS (OPEN HEAD DRUM) (stock items)

| Product | Code | Pack Qty | Pallet Qty | Piece Price | Pack Price | Pallet Price |
|---|--------------|----------|------------|-------------|------------|--------------|
| 30L CARBOY NATURAL/BLACK <i>(Dia 325mm, Ht 460mm, Neck 275mm, includes lid & o-ring)</i> | AT30LCARNATV | 12 | | 24.70 | 19.43 | 17.85 |
| 60L CARBOY NATURAL/BLACK <i>(Dia 400mm, Ht 625mm, Neck 275mm, includes lid & o-ring)</i> | AT60LCARNATV | 6 | 27 | 51.17 | 40.78 | 37.67 |
| 35L BARREL NATURAL with BLUE Lid | AB35LNAT | 9 | 81 | 28.40 | 23.10 | 21.11 |

DRUMS (WITH LID & LOCKING BAND) (stock items)

| Product | Code | Pack Qty | Pallet Qty | Piece Price | Pack Price | Pallet Price |
|---|-------------|----------|------------|-------------|------------|--------------|
| 120L Black Drum Standard open head drum <i>(Dia 500mm, Ht 825mm, includes lid & locking band)</i> | R120LOHD | 5 | 10 | 114.84 | 97.24 | 87.72 |
| Lid only | R120LOHDLID | | | 16.85 | | |
| 200L Blue Drum (Black Lid) Standard open head drum <i>(Dia 540mm, Ht 950mm, includes lid & locking band)</i> | R200LMOHD | | 8 | 142.90 | | 132.40 |

DRUMS (CLOSED HEAD)

| Product | Code | Pallet Qty | Piece Price | Pack Price |
|---|-----------|------------|-------------|------------|
| (stock item) | | | | |
| 220L Blue Drum Standard / Dangerous Goods Closed head drum <i>(Dia 580mm, Ht 922mm, 2 x 50mm bungs on top)</i> | R200LMSDG | 4 | 74.72 | 67.43 |



MH1605



AT30LCARV



AB35L



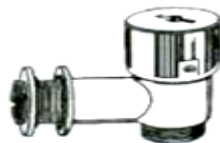
R200LMSDG
R120LOHD

WHOLESALE PRICE LIST: 27 May 2022 (**EX PERTH)

PRICES GST EXCLUSIVE

| DRUM ACCESSORIES | | (stock items) | | |
|----------------------------------|-----------------|---------------|-------------|------------|
| Product | Code | Pack Qty | Piece Price | Pack Price |
| BUNGS | | | | |
| 20mm Bung | BUNG20MM | 3500 | 0.36 | 0.21 |
| 50mm Bung | BUNG50MM | | 2.14 | |
| 50mm Combination Bung - Aust | BUNG50MMCOMB | | 3.21 | |
| Combination Bung - German Mauser | BUNGCOMBGM | | 5.00 | |
| Combination Bung - US | BUNGCOMBBUTT | | 4.29 | |
| TAPS | | | | |
| 50mm Rieke Flow King Tap | TAP50MMFLOWKING | | 37.17 | 35.86 |
| 20mm Tap - Standard (Black) | TAP20MMBLK | 500 | 0.90 | 0.66 |
| PUMPS | | | | |
| Drum Pump | DRUMPUMP | 2 | 45.00 | 30.00 |
| ADAPTORS | | | | |
| 50mm Adaptor for Visy 200L Drum | ADAPT50MM | | 14.29 | |
| IBC Adaptor Black | ADAPTIBC | | 21.43 | |
| IBC Camlock Adaptor | ADAPTCAMLOCK | | 21.43 | |
| 2" Adaptor German Mauser White | ADAPT2inchGM | | 14.29 | |
| 2" Adaptor USA Green | ADAPT2inchUS | | 21.43 | |
| HONEY GATES | | | | |
| 40mm honey gate | GATE40MM | | 23.07 | |
| 50mm honey gate | GATE50MM | | 38.60 | |
| 40mm "O" ring Small | GATE40MMORS | | 1.07 | |
| 40mm "O" ring Large | GATE40MMORL | | 1.36 | |
| 50mm "O" ring Small | GATE50MMORS | | 1.21 | |
| 50mm "O" ring Large | GATE50MMORL | | 1.52 | |

DRUMS



Delivery Perth Nominated metro areas - \$30+gst.

Outer metro/ regions - nominate your freight company or ask for a quote. *Prices and delivery areas subject to change.

JARS / JUGS

WHOLESALE PRICE LIST: 27 May 2022 (**EX PERTH)

PRICES GST EXCLUSIVE

JARS & ACCESSORIES

(stock items)

| Product | Code | Pack Qty | Pallet | Piece Price | Pack Price | Pallet Price |
|--|-------------|----------|--------|-------------|-------------|--------------|
| Square jar - 250 gram (200ml) | | | | | | |
| Clear base only | JSQ250GM | 300 | 3600 | 0.56 | 0.40 | 0.36 |
| 53mm White Cap only | CAP53MMWH | 300 | 3600 | 0.18 | 0.16 | 0.16 |
| (55 x 55 x Fill Ht 65mm) | | | | 0.74 | 0.56 | 0.52 |
| Square jar - 500 gram (375ml) | | | | | | |
| Clear base only | JSQ500GMPB | 275 | 3300 | 0.51 | 0.37 | 0.34 |
| 63mm yellow tamper evident cap only | CAP63MMYEL | 275 | 3300 | 0.13 | 0.12 | 0.12 |
| (65 x 65 x Fill Ht 90mm) | | | | 0.64 | 0.49 | 0.46 |
| Round jar - 500 gram (375ml) | | | | | | |
| Clear base only | JR500gmPB | 290 | 3480 | 0.72 | 0.47 | 0.42 |
| 63mm yellow tamper evident cap only | CAP63MMYEL | 290 | 3480 | 0.13 | 0.12 | 0.12 |
| (Dia 67 x Fill Ht 99mm) | | | | 0.85 | 0.59 | 0.54 |
| Squeeze Bottle - 500 gram (375ml) | | | | | | |
| Clear base only | BHNY500GM | 200 | 1600 | 0.66 | 0.49 | 0.45 |
| 38mm yellow flip squeeze cap only | CAP38MMHNY | 200 | 1600 | 0.35 | 0.30 | 0.27 |
| (80 x 45 x Fill Ht 120mm) | | | | 1.01 | 0.79 | 0.72 |
| Round jar - 1000 gram (750ml) | | | | | | |
| Clear base only | JR1000GMCTN | 80 | 960 | 1.18 | 0.88 | 0.80 |
| 70mm yellow tamper evident cap only | CAP70MMYEL | 80 | 960 | 0.30 | 0.22 | 0.19 |
| (85 x 85 x Fill Ht 160mm) | | | | 1.48 | 1.10 | 0.99 |



JUGS

(stock items)

| Product | Code | Pack Qty | 5 Pack | Piece Price | Pack Price | 5 Pack Price |
|--|----------|----------|--------|-------------|------------|--------------|
| 250ml Measure Jug | MJ250ML | 20 | 100 | 4.19 | 3.07 | 2.44 |
| (Calibrated - fluid ozs, mls & metric cup) | | | | | | |
| 500ml Measure Jug | MJ500ML | 20 | 100 | 5.59 | 3.72 | 3.25 |
| (Calibrated - fluid ozs, mls & metric cup) | | | | | | |
| 1 Litre Measure Jug | MJ1L | 20 | 100 | 10.97 | 7.29 | 6.38 |
| (Calibrated - mls & ltrs) | | | | | | |
| 2 Litre Measure Jug | MJ2L | 10 | 50 | 14.30 | 9.51 | 8.31 |
| | | | | | | |
| 3 Litre Measure Jug | MJ3L | 10 | 50 | 14.51 | 9.65 | 8.44 |
| (Calibrated - mls & ltrs) | | | | | | |
| 5 Litre Measure Jug | MJ5L | 10 | 50 | 20.00 | 13.30 | 11.63 |
| (Calibrated - mls & ltrs) | | | | | | |
| 10 Litre Measure Jug | MJ10L | 5 | 25 | 39.35 | 26.17 | 22.80 |
| 10 Litre Measure Jug Lid | MJ10LLid | 5 | 25 | 12.47 | 8.29 | 7.25 |
| 20 Litre Measure Jug | MJ20L | 5 | 25 | 46.55 | 30.96 | 27.06 |
| (Calibrated - ltrs) | | | | | | |

Delivery Perth Nominated metro areas - \$50+gst.

Outer metro/ regions - nominate your freight company or ask for a quote. *Prices and delivery areas subject to change.

WHOLESALE PRICE LIST: 27 May 2022 (EX PERTH)**

PRICES GST EXCLUSIVE

| ROUND CONTAINERS | | (stock items) | | | | | CONTAINERS |
|---|----------------------|----------------------|-------------------|--------------------|-------------------|---------------------|-------------------|
| Size | Code | Pack Qty | Pallet Qty | Piece Price | Pack Price | Pallet Price | |
| 500 gram (380ml) | NCI Container | | | | | | |
| Clear container | NCIC380MLCLR | 345 | 1725 | 0.60 | 0.40 | 0.36 | |
| Yellow lid (tamper evident) | NCIL380MLYEL | 345 | 1725 | 0.21 | 0.15 | 0.14 | |
| <i>(Dia 95 x Ht 85mm)</i> | | | | 0.81 | 0.55 | 0.50 | |
| 700 gram (500ml) | NCI Container | | | | | | |
| Container only (white or natural) | NCIC500MLWH | 240 | 4320 | 0.91 | 0.67 | 0.59 | |
| Lid only (white or natural) | NCIL500MLWH | 240 | 4320 | 0.69 | 0.51 | 0.44 | |
| <i>(Int Dia 98mm, Ext Dia 110mm, Ht 95mm)</i> | | | | 1.60 | 1.18 | 1.03 | |
| 1 kilogram (800ml) | NCI Pail | | | | | | |
| Clear pail | NCIP.8LCLR | 144 | 2592 | 1.10 | 0.80 | 0.70 | |
| Yellow lid (tamper evident) | NCIL.8/1.2LYEL | 144 | 2592 | 0.34 | 0.25 | 0.22 | |
| <i>(Int Dia 124mm, Ext Dia 132mm, Ht 102mm)</i> | | | | 1.44 | 1.05 | 0.92 | |
| 1.5 kilogram (1.2 litre) | NCI Pail | | | | | | |
| Clear pail | NCIP1.2LCLR | 144 | 2592 | 1.34 | 0.97 | 0.85 | |
| Yellow lid (tamper evident) | NCIL.8/1.2LYEL | 144 | 2592 | 0.34 | 0.25 | 0.22 | |
| <i>(Int Dia 124mm, Ext Dia 132mm, Ht 148mm)</i> | | | | 1.68 | 1.22 | 1.07 | |
| 3 kilogram (2.2 litre) | NCI Pail | | Nat/ Or/ | | | | |
| Clear pail | NCIP2.2LCLR | 120 | 1920 | 1.67 | 1.22 | 1.07 | |
| Yellow lid (tamper evident) | NCIL2.2LYEL | 120 | 1920 | 0.49 | 0.35 | 0.31 | |
| <i>(Int Dia 165mm, Ext Dia 173mm, Ht 146mm)</i> | | | | 2.16 | 1.57 | 1.38 | |

| ICECREAM CONTAINERS | | (stock items) | | | | |
|--|-------------|----------------------|------|-------------|-------------|-------------|
| 2L Square White | | | | | | |
| Container only | NCIICC2LWH | 168 | 4032 | 0.99 | 0.69 | 0.62 |
| Lid only | NCIICL2LWH | 168 | 2736 | 0.53 | 0.38 | 0.33 |
| <i>(Ext L 170 x W 170 x Ht 95mm)</i> | | | | 1.52 | 1.07 | 0.95 |
| 3L Rectangular Natural | | | | | | |
| Container only | NCIICC3LNAT | 120 | 2160 | 1.09 | 0.79 | 0.69 |
| Lid only | NCIICL3LNAT | 120 | 2160 | 0.63 | 0.46 | 0.40 |
| <i>(Ext L 245 x W 165 x Ht 95mm)</i> | | | | 1.72 | 1.25 | 1.09 |
| 5L Rectangular White | | | | | | |
| Container only | NCIICC5LWH | 88 | 1408 | 1.49 | 1.08 | 0.94 |
| Lid only | NCIICL5LWH | 88 | 1408 | 1.18 | 0.87 | 0.76 |
| <i>(Ext L 350 x W 165 x Ht 130mm)</i> | | | | 2.67 | 1.95 | 1.70 |
| <i>5L available in silver and black carton quantities only</i> | | | | | | |

| SQUARE CONTAINERS | | (stock items) | | | | |
|--|---------------|----------------------|------|------|------|------|
| 2.5L Square Natural | | | | | | |
| Container & lid | CAMSQ2.5LNAT | 100 | 1200 | 1.80 | 1.46 | 1.32 |
| <i>(Ext L 179 x W 179 x Ht 106mm - with lid)</i> | | | | | | |
| 3.15L Square Natural | | | | | | |
| Container & lid | CAMSQ3.15LNAT | 100 | 1200 | 2.12 | 1.61 | 1.45 |
| <i>(Ext L 179 x W 179 x Ht 122mm - with lid)</i> | | | | | | |
| 4.5L Square Natural | | | | | | |
| Container & lid | CAMSQ4.5LNAT | 100 | 1200 | 2.48 | 1.87 | 1.67 |
| <i>(Ext L 179 x W 179 x Ht 192mm - with lid)</i> | | | | | | |



Delivery Perth Nominated metro areas - \$30+gst.

Outer metro/ regions - nominate your freight company or ask for a quote. *Prices and delivery areas subject to change.

WHOLESALE PRICE LIST: 27 May 2022 (**EX PERTH)

PRICES GST EXCLUSIVE

MICRO BINS

(blue stock)

| Product | Code | Pack Qty | Pallet Qty | Piece Price | Pack Price | Pallet Price |
|--|-----------|----------|------------|-------------|------------|--------------|
| (N5) 100 x 120 x 60 mm <i>available in blue. Red, green & yellow carton qtys. Polypropylene.</i> | IH1000BLU | 50 | 2400 | 3.00 | 2.18 | 1.88 |
| (N10) 100 x 178 x 85 mm <i>available in blue. Red, green & yellow carton qtys. Polypropylene.</i> | IH1001BLU | 100 | 1600 | 4.76 | 3.38 | 2.92 |
| (N20) 135 x 225 x 125 mm <i>available in blue. Red, green & yellow carton qtys. Polypropylene.</i> | IH1002BLU | 40 | 640 | 11.75 | 8.52 | 7.34 |
| (N30) 205 x 280 x 165 mm <i>available in blue. Red, green & yellow carton qtys. Polypropylene.</i> | IH1003BLU | 18 | 288 | 14.83 | 10.75 | 9.27 |
| (N40) 410 x 280 x 165 mm <i>available in blue. Red, green & yellow carton qtys. Polypropylene.</i> | IH1004BLU | 6 | 96 | 22.22 | 16.11 | 13.89 |
| (N60) 440 x 410 x 210 mm <i>available in blue. Red, green & yellow carton qtys. Polypropylene.</i> | IH1006BLU | 5 | 80 | 41.14 | 29.19 | 25.17 |

MICRO BINS

MICRO BIN DIVIDERS

(stock items)

| Product | Code | Pack Qty | | Piece Price | Pack Price | |
|---|-----------|----------|--------------------------|-------------|------------|--|
| 253 x 150 mm <i>available only in grey. To suit IH1003 & IH1004. Polystyrene.</i> | IH1015GRY | 50 | Nat/ Or/ Blu/ Red/ | 3.22 | 2.33 | |
| 410 x 198 mm <i>available only in grey. To suit IH1006. Polystyrene.</i> | IH1020GRY | 50 | | 6.23 | 4.52 | |

STEEL PANELS

(non-stock)

| Product | Code | Piece Price | | |
|---|-----------|-------------|--|--|
| 456 x 456 mm <i>available only in grey. Single sided</i> | IH1030GRY | 39.04 | | |
| 456 x 912 mm <i>available only in grey. Single sided</i> | IH1031GRY | 74.74 | | |
| 456 x 1824 mm <i>available only in grey. Single sided</i> | IH1033GRY | 104.28 | | |
| 456 x 1919 mm <i>available only in grey. Double sided</i> | IH1034GRY | 363.05 | | |

***Dividers not included with microbins



IH1000



IH1001



IH1002



IH1003



IH1004 w/ IH1015



IH1006 w/ IH1020

UTILITY BINS

WHOLESALE PRICE LIST: 27 May 2022 (**EX PERTH)

PRICES GST EXCLUSIVE

UTILITY BINS

(stock items)

| Product | Code | Pack Qty | Piece Price | Pack Price |
|--|----------|----------|-------------|------------|
| 324 x 105 x 100 Triple Divider Dimensions: Outside: 324 x 105 x 100 mm Inside: 290 x 92 x 98 mm Weight: 431g Capacity: 2.6 litres Divider Provision: Maximum 5 | IH335GRY | 24 | 14.57 | 10.56 |
| 324 x 203 x 100 Double Divider Dimensions: Outside: 324 x 203 x 100 mm Inside: 290 x 190 x 98 mm Weight: 622g Capacity: 5.4 litres Divider Provision: Maximum 5 | IH338GRY | 12 | 18.01 | 13.06 |
| 424 x 105 x 100 Double Divider Dimensions: Outside: 424 x 105 x 100 mm Inside: 390 x 92 x 98 mm Weight: 503g Capacity: 3.5 litres Divider Provision: Maximum 5 | IH344GRY | Nat/ Or/ | 14.34 | 10.40 |
| 424 x 203 x 100 Double Divider Dimensions: Outside: 424 x 203 x 100 mm Inside: 390 x 190 x 98 mm Weight: 725g Capacity: 7.3 litres Divider Provision: Maximum 5 | IH348GRY | 12 | 8.11 | 11.75 |
| 100 x 100 Divider - For IH335 & IH344 | IH301GRY | 50 | 1.05 | 0.76 |
| 200 x 100 Divider - For IH338 & IH348 | IH302GRY | 50 | 1.53 | 1.11 |

Dividers are provided with Utility Bins

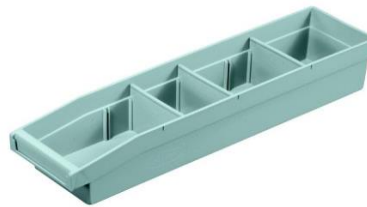
Utility bins are made from Calcium filled polypropylene. Dividers are made from polypropylene.



IH335GRY



IH338GRY



IH348GRY

WHOLESALE PRICE LIST: 27 May 2022 (EX PERTH)**

PRICES GST EXCLUSIVE

| PALLETS | | (non-stock) | | | | |
|---|-------------|--------------------|--|--------------------|-------------------|--|
| Product | Code | Pack Qty | | Piece Price | Pack Price | |
| Eco Pallet (1100 x 1100 x 120 4 way entry) | PALECO | 5 | | 84.36 | 68.54 | |
| Grey Pallet (1165mm x 1165mm x 150 4 way entry) | IH537GRY | 5 | | 187.98 | 145.95 | |
| Nally Enviropal (1165mm x 1165mm x 130 4 way entry) | PALENIRO | 5 | | 223.55 | 173.56 | |
| Nally Export Pallet (1100mm x 1100mm x 130 4 way entry) | PALEXPOR | 5 | | 100.01 | 72.94 | |

PALLETS, SPILL GUARDS



| BUNDS | | (non-stock) | | | | |
|-----------------------------------|-------------|--------------------|--|--------------------|--|--|
| Product | Code | | | Piece Price | | |
| Poly 2 Drum Bund | MXP1001 | | | 400.29 | | |
| Poly 4 Drum Bund | MXP1002 | | | 426.38 | | |
| Poly Single IBC 1000L Bund | MXP6001 | | | 1,926.76 | | |
| Poly Double IBC 1000L Bund | MXP6002 | | | 2,072.08 | | |

| MERCHANDISING UNITS | | (non-stock) | | | | |
|-----------------------------|----------------|--------------------|--|--------------------|-------------------|--|
| Product | Code | Pack Qty | | Piece Price | Pack Price | |
| Pallet Version Black | PALLETMU | 5 | | 120.91 | 86.36 | |
| Dolly Version Black | PALLETMUD | 5 | | 279.57 | 202.69 | |
| Dolly Trolley Handle | PALLETMUDHANDL | | | 90.75 | | |

| SAFETY STEPS | | (stock item) | | | | |
|--|-------------|---------------------|-------------------|--------------------|--|---------------------|
| Product | Code | | Pallet Qty | Piece Price | | Pallet Price |
| Safety Step with buffers ORANGE (480mm x 480mm x 360mm) | NS-T-SWB | | 25 | 94.71 | | 79.71 |

| FLOOR MATTING | | (non-stock) | | | | |
|--|-------------|--------------------|-------------------|--------------------|-------------------|---------------------|
| Product | Code | Pack Qty | Pallet Qty | Piece Price | Pack Price | Pallet Price |
| Interlockable Floor Mat (508 x 508 x 25) Avail Grey or Green | IG051GRN | 10 | 360 | 24.13 | 19.63 | 18.86 |



Delivery Perth Nominated metro areas - \$30+gst.

Outer metro/ regions - nominate your freight company or ask for a quote. *Prices and delivery areas subject to change.

☎ 1300 747 847
🖱 www.peopleinplastic.com.au
✉ sales@peopleinplastic.com.au
ABN 73 407 548 715



QLD 1876 Ipswich Rd ▪ ROCKLEA
NSW 22 / 61 Pine Rd ▪ YENNORA
VIC 2 / 571 Somerville Rd ▪ SUNSHINE
WA 4 / 84 Berriman Dr ▪ WANGARA

Delivery Perth Nominated metro areas - \$30+gst.

Outer metro/ regions - nominate your freight company or ask for a quote. *Prices and delivery areas subject to change.

WHOLESALE PRICE LIST: 27 May 2022 (**EX PERTH)

PRICES GST EXCLUSIVE

WHEELIE BINS

| Product | Code | Pack Qty | Piece Price | Pack Price |
|---|------------|-----------|-------------|------------|
| 60L (L 410 x W 445 x H 625 - 6.2kg) | | | | |
| Dark Green / Nature Green / Grey / Black | WB60DG | 5 | 69.36 | 57.23 |
| Red / Sky Blue (FG) / Yellow / Burgundy (FG) | WB60R | 5 | 74.59 | 61.55 |
| 80L (L 445 x W 510 x H 820 - 8.2kg) | | | | |
| Dark Green / Nature Green / Grey / Black | WB80DG | 5 | 69.36 | 57.23 |
| Red / Sky Blue (FG) / Yellow | WB80R | 5 | 75.89 | 51.29 |
| 120L (L 490 x W 550 x H 900 - 9.3kg) | | | | |
| Dark Green / Nature Green / Grey / Black | WB120DG | 5 | 70.91 | 58.52 |
| Red / Sky Blue (FG) / Yellow / Burgundy (FG) | WB120R | 5 | 96.38 | 84.25 |
| Natural (FG) / White (FG) / Purple (FG) | WB120N | 5 | 84.53 | 69.75 |
| Brown / Orange / Lilac | WB120BN | 5 | 84.53 | 69.75 |
| 140L (L 535 x W 615 x H 925 - 10.4kg) | | | | |
| Dark Green / Nature Green | WB140DG | 5 | 73.27 | 60.46 |
| Red / Sky Blue (FG) / Yellow | WB140R | 5 | 63.71 | 52.47 |
| Orange | WB140O | 5 | 63.71 | 52.47 |
| 240L (L 585 x W 730 x H 1060 - 12.3kg) | | | | |
| Dark Green / Nature Green / Grey / Black | WB240DG | 5 | 68.57 | 56.47 |
| Red / Sky Blue (FG) / Yellow / Burgundy (FG) | WB240R | 5 | 78.41 | 56.47 |
| Natural (FG) / White (FG) / Purple (FG) | WB240N | 5 | 68.57 | 56.47 |
| Brown / Orange | WB240BN | 5 | 68.57 | 56.47 |
| Accessories | | | | |
| Axel 240L | WBAXEL240 | all sizes | 8.35 | |
| Spare Lids | WBLID240DG | all sizes | 18.45 | |
| Wheel | WBWHEEL | | 10.40 | |
| Hinge Pin for Lid | WBHINGEPIN | | 0.93 | |

Dark Green limited stock/ all other allow 3 days lead time

*Blue, Burgundy, Natural, White and Purple Wheelie Bins are Food Grade



Delivery Perth Nominated metro areas - \$30+gst.

Outer metro/ regions - nominate your freight company or ask for a quote. *Prices and delivery areas subject to change.